

# The Current

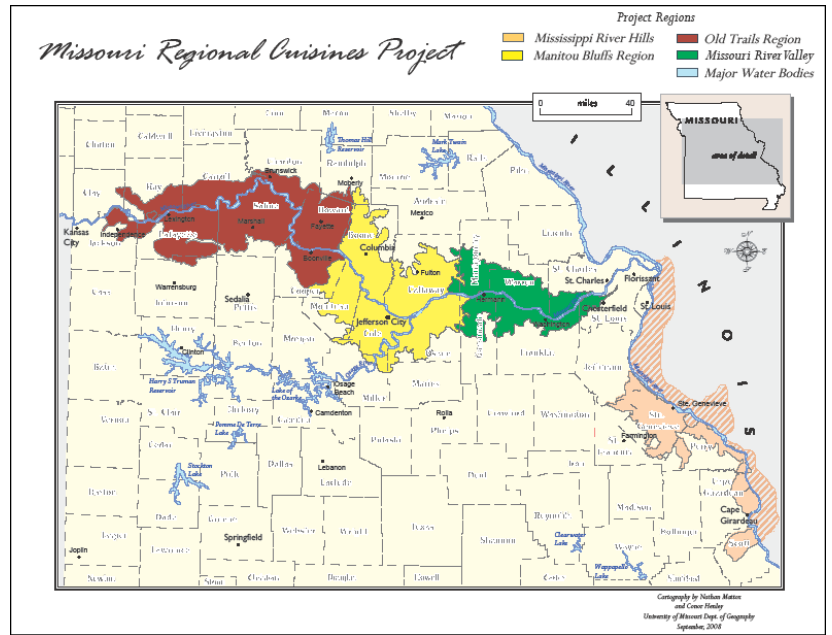
## Connecting the Cities and Counties of the Mid-Missouri Region

Mid-Missouri Regional Planning Commission November 2008

### Mid-MO RPC Partners with Missouri Regional Cuisines

The Missouri Regional Cuisines Project, begun in 2003 in the pilot Mississippi River Hills region, has recently expanded to include three regions along the Missouri River. The three regions along the Missouri River stretch from St. Louis County to eastern Jackson County. The central region, Manitou Bluffs, includes four of the six MidMO RPC member counties (Boone, Moniteau, Cole, and Callaway) and a portion of Cooper County.

The goals of the Cuisines Project, conceived and led by Dr. Elizabeth Barham of MU's Institute for Continental Climate Viticulture and Enology (ICCVE), include the marketing of Missouri wines and food products from distinct ecological regions as well as the cultural products and heritage tied to those regions. Dr. Barham's work with labels of origin (or geographic indications) led to the development of the project in Missouri. The eventual goal of the project is the creation of distinctive regions which have strong name recognition and provide protection for the uniqueness of their products. Examples of such regions elsewhere include Champagne in France, the Port (wine) region in Portugal, and Napa in California.



The Mid-Missouri Regional Planning Commission's cooperation with the project is seen as beneficial in the realms of community and economic development because of its emphasis on strong relations within regions, opportunities for small entities in a globalizing market, and heritage tourism. The Planning Commission and the Cuisines Project will work together to bolster community relationships and economies within their regions. The RPC will also aid the project with GIS and mapping support. This will include work on maps displaying locations of producers, retailers, and those in the hospitality industry throughout the regions' communities. By enhancing the Cuisines Project's mapping capacity, Mid-Missouri RPC hopes to build stronger networks within and between communities as well as draw those from outside the region to our smaller communities. Mid-MO RPC also hopes to aid the Cuisines Project in its communications with county and municipal officials.

### Russellville Receives a MDC T.R.I.M. Grant Award

Last winter many communities throughout the state of Missouri were devastated by ice storm damage. Trees were broken from the weight of the ice and were left with gaping sections in them. In the Spring of 2008, the Missouri Department of Conservation promoted the Tree Resource Improvement and Maintenance cost share grant program (T.R.I.M) as a resource for communities that were hit hard by the ice storms.

This program is a comprehensive approach to tree management. Through the program, a community

can have a tree inventory completed, remove trees, prune trees, and educate the public about trees and tree planting. The only requirement, the trees must be on public property.

The City of Russellville saw an opportunity to address the needs of the Russellville Public Park through the application of a T.R.I.M. grant and asked staff at the Mid MO RPC to assist them with the application process. Many of trees in the park had suffered from ice damage and were in need of topping, trimming, and removal.

The city worked very closely with Justine Gartner throughout the process and Russellville was awarded the grant this fall.

Through T.R.I.M funding Russellville will be able to have a tree management plan developed for the park as well as tree maintenance and within the next year they will have the opportunity to add new trees to the park.



### Announcements, Conference, and Grant Opportunities (continued)

**DED Announces Neighborhood Stabilization Program - Columbia, Jefferson City and Boonville listed as Tier 1 Cities** - The Missouri Department of Economic Development (DED) today announced the first step in a program that aims to provide stability and emergency assistance to local communities facing rising foreclosures and declining property values. The program, authorized under Title III of the Housing and Economic Recovery Act of 2008, provides emergency assistance to state and local governments to help them respond to rising foreclosures and declining property values. Tier One communities, or those communities with higher than average unemployment (6.1 percent in fiscal year 2008), high concentration of low and middle income households, and above average number of high-cost loans as a percentage of housing in 2007 - explained the HUD requirements of the program and

laid out a timeline for the development of a state response. Those communities have until November 13 to submit a request for proposal to DED. For more information about the Neighborhood Stabilization Program, contact the Missouri Department of Economic Development at 573-751-3600.

**EDA Requests Potential Infrastructure Projects** - The Mid Mo RPC is requesting from our membership to please contact us about any potential infrastructure project that is being planned. A Congressional Committee has requested to the Economic Development Administration for EDA to provide a list of infrastructure projects that would stimulate economic development in the next 5 years. The list should not include any projects that have already been submitted to EDA and it should not include any disaster related projects. The list should include only new

projects. Please provide a list of projects with a brief description, project location and an estimated dollar amount for each project listed to the attention of Ed Siegmund at [edwardsiegmund@mmrpc.org](mailto:edwardsiegmund@mmrpc.org)

**Missouri Association of Counties (MAC) Annual Conference** - The Missouri Association of Counties Annual Conference will be held Sunday November 23<sup>rd</sup> thru Tuesday November 25<sup>th</sup> at Tan-Tar-A Resort at the Lake of the Ozarks. The 2 ½ day conference includes breakout training sessions on "Financing Facilities Improvements", "Establishing County Planning", "Let Developers Pay for Infrastructure", and many others. For additional information, visit the MAC website at [www.mocounties.com/](http://www.mocounties.com/)

**Missouri Economic Development Council Fall Conference** - The Missouri Economic Development Council's fall conference will be held November 5-7 at the Adams Pointe Conference Center/Courtyard by Marriott in Blue Springs. Conference includes programs on business retention and expansion, understanding bond financing, education as and economic development partner, and many others. For additional conference information, see the MEDC website [www.showme.org](http://www.showme.org).

**MoDOT Safe Routes to School Update** Award announcements for the SRTS program were to be made on November 3, 2008, but due to changes in staff the announcement of community award has been postponed for up to a month. Mid MO RPC staff will continue to keep 2008 SRTS applicants aware of information and announcements as we receive them.

### Calendar

**November 11 - Mid Mo RPC Office closed in observation of Veterans' Day.** Thank you to all Veterans.

**November 19 - Transportation Advisory Committee. 4:30 pm. Mid Mo RPC Office.** Followed by Mid Mo RPC Annual Dinner at the Southern Boone County Senior Center at 6:00 pm.

**November 19 - Mid Mo RPC Annual Dinner. Southern Boone County Senior Center, 406**

**Douglas, Ashland, Missouri.** Social at 6:00 pm. Dinner served at 6:30 pm. Contact the Mid MO RPC office at 573.657.9779 or [mmrpc@mmrpc.org](mailto:mmrpc@mmrpc.org) for additional information.

**November 27-28 - Mid Mo RPC Office closed for Thanksgiving.**

*Happy Thanksgiving to you and your family!*



206 E. Broadway, PO Box 140  
Ashland, Missouri 65010  
Phone: 573-657-9779  
Fax: 573-657-2829

- BOARD OF DIRECTORS:**
- Kenny Kunze, Chairman, Presiding Commissioner, Moniteau County
  - Gabe Craighead, Vice-Chairman, Commissioner, Callaway County
  - Debby Lancaster, Secretary/RHSOC Chair, Mayor of Huntsdale
  - Pat Cunningham, Treasurer, City Clerk/Administrator, New Franklin
  - Steve Rasmussen, Budget Chairman, City Administrator, City of Jefferson, Cole County
  - Les Hudson, Personnel Chair, Director Planning and Protective Services, City of Fulton
  - Eddie Brickner, TAC Chair, Presiding Commissioner, Copper County
  - Darrel King, EDAC Chair, County Assessor, At-Large-Moniteau County
  - Marsha Broadus, At-Large-Howard County
  - Lowell Eaton, Presiding Commissioner, Howard County
  - Steve Eidson, City Engineer, City of Fayette, Howard County
  - Mike "PeeWee" Forck, Commissioner, Cole County
  - Norris Gerhart, Mayor of California, Moniteau County
  - Mike Kalaf, Mayor of Lohman, Cole County
  - Karen M. Miller, Commissioner, Boone County
  - Pamela Murray, Holts Summit, Callaway County
  - Bill Watkins, City Manager, City of Columbia, Boone County
  - TBD, Otterville, Cooper County

## Area F RHSOC Supports Region's Incident Support Teams (IST)

The Columbia-Boone County and the Jefferson City-Cole County Incident Support Teams (IST) were awarded \$143,417 in grant money by the Area F Regional Homeland Security Oversight Commission to acquire equipment to allow for the teams to be self sufficient upon arrival to an emergency event.

The funds were a reallocation of FY06 funds due to cost savings by coordinated procurement efforts by the RHSOCs throughout the state, and cost savings

resulting from initial project and equipment estimates.

The concept behind the IST is that during any type of natural or man-made disaster/emergency within the region, many jurisdictions will become overwhelmed in very short order. Many jurisdictions within the State have small populations and their first response agencies are composed of mainly volunteers, or individuals that serve in more than one position (i.e. Fire Chief and Emergency Management Direc-

tor). Building a system that will provide consistent support during emergency situations is a priority. The ISTs are a trained, multi-discipline, all hazards response resource for an affected jurisdiction to draw on to assist their staff with Command and General Staff incident management functions. Therefore, the ability for the ISTs to come as a complete package, able to meet all of their personal and work needs, for the initial deployment period is critical.

### FY 08 RHSOC Funds

The Area F Regional Homeland Security Oversight Committee (RHSOC) received word from SEMA at the October 21, 2008, RHSOC meeting that the region was

awarded a grant of \$652,285 for FY 08 to address designated statewide investment justifications.

Funds are distributed through recommendations by the RHSOC, and the funding process includes the following steps and deadlines:

- All projects must address an investment justification
- All projects are to be presented to the RHSOC through the designated discipline representative(s).
- Written proposals meeting one of the investment justifications (IJ) must be

submitted to Mid-Missouri Regional Planning Commission by **January 10, 2009**.

- Presentations by discipline representatives will occur at the January 20, 2009, Area F RHSOC meeting. Projects will be scored with preliminary rankings.
- The February 10, 2009, meeting will allow for project clarification (if needed) and funding recommendation consensus by the RHSOC.
- The Area F grant proposal will be submitted to SEMA by the Mid MO RPC by the end of February 2009.

### **Investment Justifications for FY 2008 Grant Cycle:**

- IJ #2** Strengthen Explosive Ordnance Detection (EOD) and Response.
- IJ #3** Implement Regional Collaboration and Response through Missouri Emergency Resource Information System (MERIS) and Technical Solution **(NEW)**
- IJ #6** Strengthening Interoperable Communications Capabilities at Missouri's Regional and State Levels
- IJ #7** Sustain and Enhance Chemical, Biological, Radiological, Nuclear and Explosive Event (CBRNE) Detection and Response
- IJ #8** Strengthen Planning and Citizen Preparedness Capabilities
- IJ #9** Strengthen Medical Surge and Mass Prophylaxis Capabilities
- IJ #10** Strengthen Information Sharing and Collaboration Capabilities

**Don't forget to call 573-657-9779 or  
email [mmrpc@mmrpc.org](mailto:mmrpc@mmrpc.org)  
to RSVP for the Annual Dinner!**

## MoDED Certified Sites Program

In October the Missouri Department of Economic Development announced a new program called the Certified Sites Program. This program is designed to "provide consistent standards regarding the availability and development of potential commercial or industrial development sites." The primary purpose of the program is to provide shovel ready locations throughout the state to businesses and corporations interested in locating in Missouri. This program is intended to be an additional economic development tool and can be utilized as part of the community planning process.

A certified site is land that meets the following requirements:

- accepted by a local government (city or county) or a locally recognized economic development organization to be environmentally assessed
- meets all of the compliance standards
- location is 10 acres or larger

The program was created by the MoDED, Ameren, KCP&L, Empire Electric, Missouri's Electric Cooperatives, the Missouri Economic Development Council, MODNR, and individual economic developers; representatives from these organizations will sit on the application review team. The partners realize the significance of quick turn around and site data supplied through the internet. Being prepared provides the competitive edge that is needed to bring businesses and industry into Missouri.

The objectives of the program are to 1) establish a statewide inventory of certified sites that can be quickly viewed by site selectors, 2) standardization and recognition of one set of site specific data that site selectors

and developers use, and 3) encourage local economic development organizations to control, invest, and comprehensively analyze sites prior to client visitation.

Certification of a site requires that the application be complete and standardized. The certification is valid for two years, each certified site will be provided with a logo that will "indicate it's achievement on the ML1 website. The cost for the environmental assessment and site acquisition are the responsibility of the local government or ED organization but the actual certification by MoDED will have no cost attached to it.

For more information regarding the Certified sites program please contact the Mid-Missouri Regional Planning Commission at (573) 657-9779.

## Announcements, Conference, and Grant Opportunities

**Boonville and Fulton Selected as DREAM Cities** - The mid Missouri communities of Boonville and Fulton were selected as DREAM communities in the third year of Governor Matt Blunt's DREAM Initiative. This initiative which began in 2006 to provide Missouri's small and mid-sized towns the same access to economic development tools as larger communities. By being a DREAM community, Boonville and Fulton gain prioritized access to state supported programs through ongoing cooperation between state agencies and funding sources. Programs include technical and financial assistance for infrastructure improvements, historic preservation, affordable housing, community services, and business development.

**Glasgow Selected for Revitalization Training by Missouri Main Street** - The Missouri Main Street Connection (MMSC) selected Glasgow to be one of four communities to receive on-site training and technical assistance for revitalizing their historic commercial district. The training opportunity will assist the Glasgow downtown organization, Glasgow Mainstreet Association, in undertaking more advanced revitalization efforts to continue to enhance its downtown. Glasgow was selected due to its efforts in the historic downtown area of restoring several building facades and recruiting new retail businesses into the area.

**MoDNR Provides Certified Operator Information Online** - The Missouri Department of Natural Resources has posted a new online resource with information about Missouri's drinking water and wastewater system operators. The new tool allows the public to view and search information about operators who are certified in Missouri for drinking water treatment, drinking water distribution, wastewater and concentrated animal feeding operations. Users can check the status of an operator's certification and search operators by county and certification type on the department's web site at [www.dnr.mo.gov/operator](http://www.dnr.mo.gov/operator). Operators who are available for contract work will be highlighted, making it easy for systems that have lost an operator to quickly search for a replacement. Contact Darlene Helmig at 1-800-361-4827, for questions about searching the web site.

**Regional Cuisines Organizational Meeting** An organizational meeting for the Old Trails region will be held on Monday, November 10, from 2:00 to 5:00 pm, in Marshall, Missouri. The meeting is held at Martin Community Center, 1985 South Odell, Marshall, Missouri. Meeting will be followed by regional food and wine tasting. Both events are free, but please RSVP if you plan on attending to Denise Izmerian at (660)882-4003, or email [mrpc.rsvp@gmail.com](mailto:mrpc.rsvp@gmail.com).

**MoDOT Safe and Sound Programs: Briefings on Bridge Repairs- Callaway and Cooper Counties** - MoDOT is in progress of updating Missouri bridges through the Safe and Sound Bridge Improvement Program. This program is the largest bridge program in the history of Missouri, totaling 802 bridges being replaced or updated beginning in the spring of 2009. How does this program affect Mid-Missouri Regional Planning Commission and planning partners? There are seven bridges in District 5 that will be part of the 100 quick start re-decks or rehabs resulting in the closure of bridges and causing detour routes. These bridges are located in Callaway and Cooper counties, intersecting I-70. The Callaway routes are "D, J, M, and JJ." Cooper routes are 5, 41, and 179. MoDOT will be conducting community briefings in District 5 at the following locations:

Thursday, November 6, Knights of Columbus Hall, 1515 Radio Hill Road, Boonville, 4:30-6:30 pm.

Thursday, November 13, North Callaway High School, 2700 Hwy 54, Kingdom City, 4:30 to 6:30 pm.

For more information, 1-888-275-6636 or [www.modot.org](http://www.modot.org)

### Area F RHSOC Primary Representatives 2008-2009

**911:** Lisa Jordan, 573-437-7774

**Agriculture:** John Fortman,  
660-834-3637

**County Government:** Rich Daniels, 573-564-8091

**Education:** Jim Jones, 573-636-2020

**Emergency Management:** Kris Bayless, 573-437-2195

**Emergency Medical Services:**  
David Colbert, 573-564-3829

**Fire Agencies:** Kenneth Hoover,  
573-581-6235

**Health Department:** Jane Hubbs,  
573-636-2181

**HSRT:** Chuck Witt (Vice-Chair),  
573-874-7391

**Industry/Utilities:** Rich Green,  
573-893-5200

**Municipal Government:**  
Debby Lancaster,  
573-447-5000

**Police:** Dave Severson (Chair),  
573-302-2019

**Public Works:** ML Cauthon,  
660-882-5257

**Sheriff Agencies:** John Page  
573-317-1004

**Volunteer:** Anne Johnson  
573-642-3776